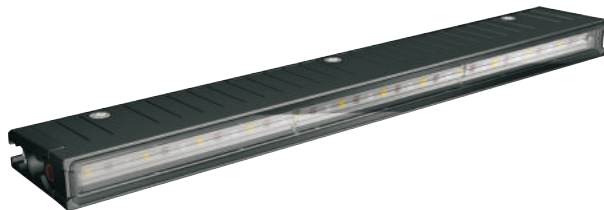


911[®]SIGNAL



911 Signal Technology Inc.

Add:Room 701-702,Hengwei Building,No.258, Tiangao Lane,
Shounan Subdistrict,Yinzhou Area,Ningbo City, Zhejiang,China.

Tel: +86 574 89017911 +86 400 6757911

Fax: +86 574 82822560

Email: sales@911signal.com

Website: www.911signal.com

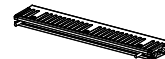
SIDEWINDER

Running Board Light

FEATURES

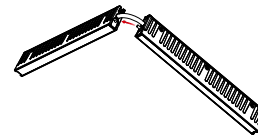
- SAE J595, CA T13, ECE R65 and R10 certified
- Sleek and low-profile with high light intensity
- Extra wide lighting angle from 16° upwards and 8° downwards
- Utilizing modular design, the lengths can be customized from 1 to 6 modules, applicable for versatile vehicles including Ford, Dodge, Chevy etc
- Mortise and tenon joint design, quick and easy installation with brackets
- Foldable, minimized package reduces shipping cost and storage space
- Tough, anti-corrosive and water-resistant thermal plastic provides excellent heat dissipation
- Available in dual or triple colors
- IP69K

MOUNTING



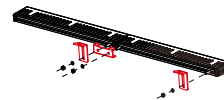
Step1

Bolts are inserted into the rails before shipping



Step2

Embed the bolt



Step3

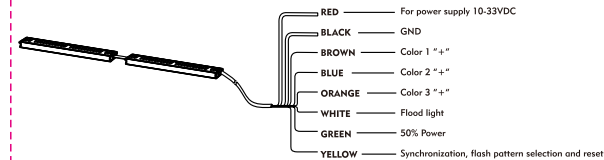
Secure the modules with brackets included



Step4

Attach the products to the vehicle with brackets

WRING



- Connect YELLOW wires of all heads together for synchronization
- To change flash patterns, apply +VDC for less than 1 second and release
- Flash patterns will be reset when YELLOW wires are connected to RED wire for more than 5 seconds

FLASH PATTERNS

- 1 Whirl
- 2 Steady-Double
- 3 Single 120 All
- 4 Double 120 All
- 5 Single 240 All
- 6 Single 120 L/R
- 7 Double 120 L/R
- 8 Single 240 L/R
- 9 Single 120 Split 1
- 10 Single 240 Split 1
- 11 Single 120 In/Out
- 12 Single 240 In/Out
- 13 Combo Single 120
- 14 Combo Single 240
- 15 Combo Single 120/240