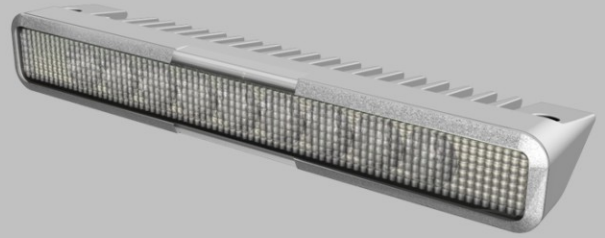


# Worklight SL

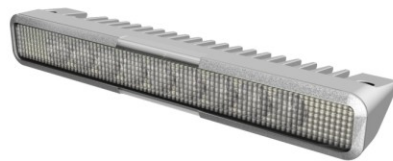


## CAUTION

Keep away from corrosive substances.

Keep away from fire.

Avoid direct look into the light.

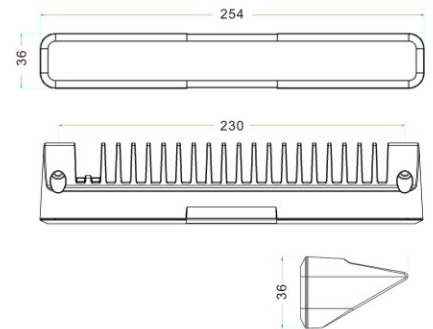


Keep hands away from operating lights to prevent burns.

Disassembly is not allowed.

## FEATURE

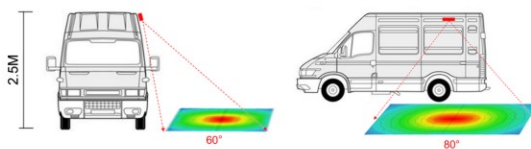
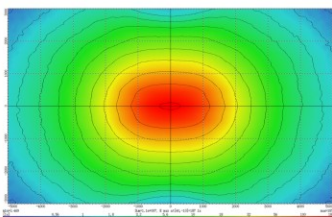
• SL can be easily fitted to the side of your vehicle. For those who are upgrading to a new scene light, you may find it super easy to install SL because the wire connector can be adjusted to the location that fits your original mounting location.



## SL PRODUCT SPECIFICATION

Item	Voltage	Power	Lux	Lumen	LED	Color Temp	Certificate
120601	DC 10-33V	15W	290lx(2M)	1000lm	9Pcs 2W LED	6000K	R10

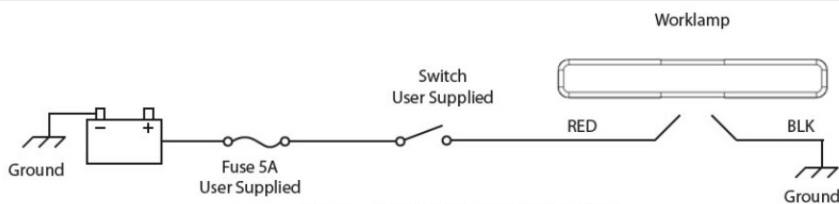
Item	120301
Flood Light	x
Cable	x
Nylon Lens	x
Polarity Reversal Protection	x
Mount:Side	x



## APPLICATION



## WIRING DIAGRAM



WIRING DIAGRAM FOR REFERENCE ONLY

## 911 SIGNAL TECHNOGY INN.

Tel: +86-574-89017911 +86-400-6757-911  
 Fax: +86-574-82822560  
 Email: sales@911signal.com  
 Website: www.911signal.com  
 Add: Room 701-702, Hengwei Building  
 No. 258, Tangao Lane  
 Shounan Subdistrict, Yinzhou Area, Ningbo  
 City, Zhejiang, China