

911 SIGNAL TECHNOLOGY INC.

Tel:+86-574-89017911 +86-400-6757-911

Fax:+86-574-82822560

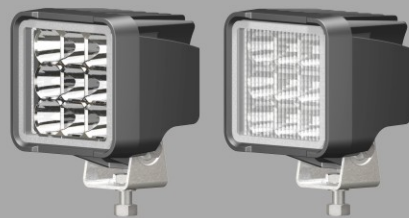
Email:sales@911signal.com

Website:www.911signal.com

Add:Room701-702,Hengwei Building,No.258,
Tangao Lane,
Shounan Subdistrict,Yinzhou Area,Ningbo
City,Zhejiang,China.

911 *SIGNAL*[®]

Worklight
S22



CAUTION



Keep away from corrosive substances.

Keep away from fire.



Avoid direct look into the light.



Keep hands away from operating lights to prevent burns.

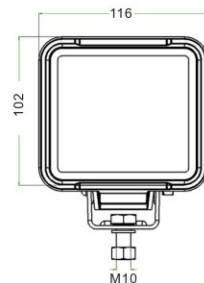
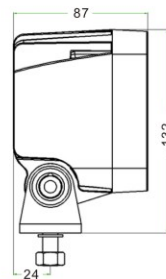
Disassembly is not allowed.



FEATURE

• S22 increases safety level and decreases accident rate in your working area by delivering homogenous illumination.

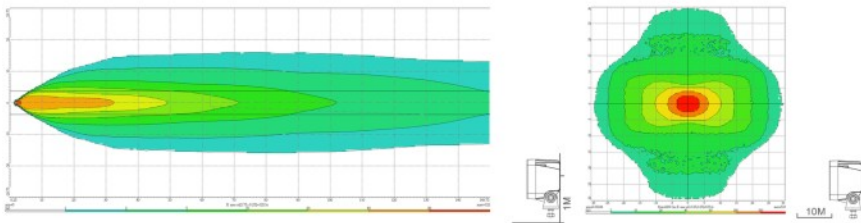
• Having a color temperature of 7000K, S22 simulates the conditions under daylight. • S22 is glare-free and protects your eyes from getting hurt when looking to the direction of the light source.



S22-LR PRODUCT SPECIFICATION

Item	Voltage	Power	Lux	Lumen	LED	Color Temp	Certificate
120201	DC 9-28V	38W	530lx(10M)	2200lm	9Pcs 5W LED	7000K	R10 EMC CLASS 5 certificate pending

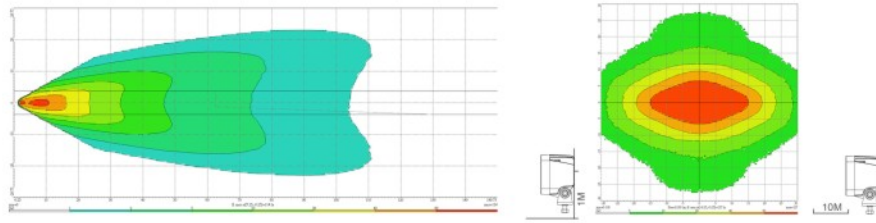
Item	120201
Long-Range Illumination	x
Cable	x



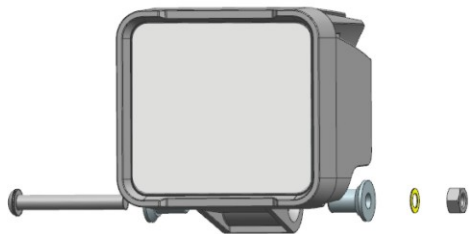
S22-CR PRODUCT SPECIFICATION

Item	Voltage	Power	Lux	Lumen	LED	Color Temp	Certificate
120251	DC 9-28V	38W	130lx(10M)	2200lm	9Pcs 5W LED	7000K	R10 EMC CLASS 5 certificate pending

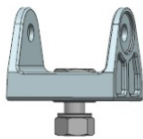
Item	120251
Close-Range Illumination	x
Cable	x



COMPONENTS



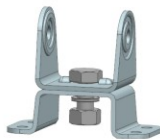
① (Standard)



② (Optional)



③ (Optional)



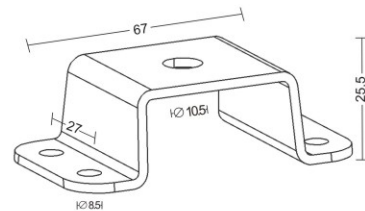
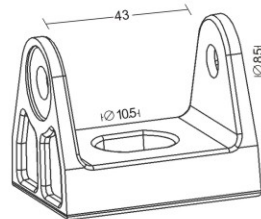
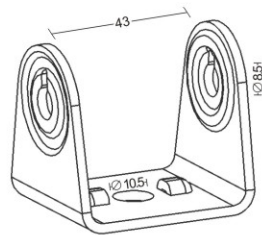
④ (Optional)



⑤ (Optional)

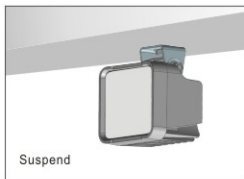
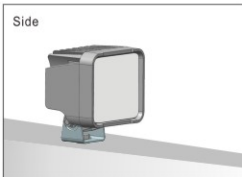
You can choose from five brackets.

BRACKETS



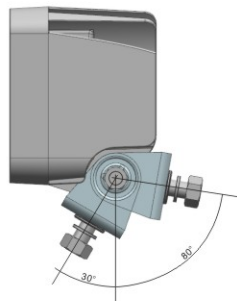
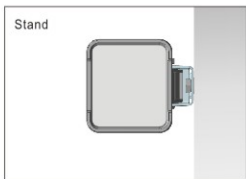
MOUNTING OPTIONS

Side



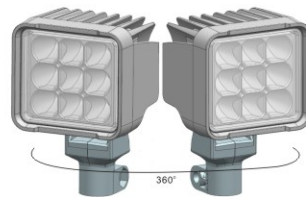
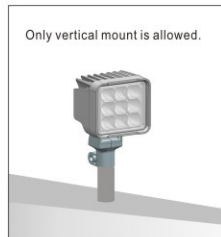
Suspend

Stand



MOUNTING OPTIONS

Only vertical mount is allowed.



APPLICATION



Tractor



Combined Harvester



Excavator



Fire Truck



Tow Truck



Forwarder



Truck



Forklift



Ambulance



Snow Plough

WIRING DIAGRAM

