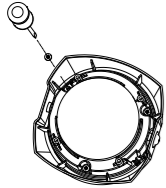


REMATCH (Not applicable to the ECO version)

STEP 1

Unfasten the screws on the bottom.

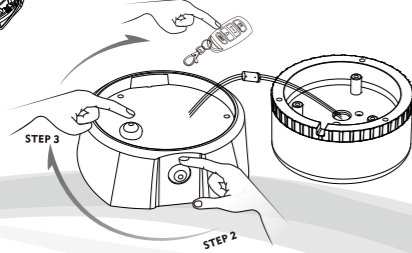


STEP 2

Power the beacon up.

STEP 3

Press the button for 2 seconds, then press the 'Unlock' button on the new controller until the beacon turns off. The new controller is now matched to the beacon.
A beacon can be matched up to 20 controllers. If it exceeds 20, long press the button for 6 seconds to erase all the matching memory. Repeat Step 3 to rematch.



911 Signal Technology Inc.

Add:Room 701-702,Hengwei Building,No.258, Tiangao Lane,
Shounan Subdistrict,Yinzhou Area,Ningbo City, Zhejiang,China.

Tel: +86 574 89017911 +86 400 6757911

Fax: +86 574 82822560

Email: sales@911signal.com

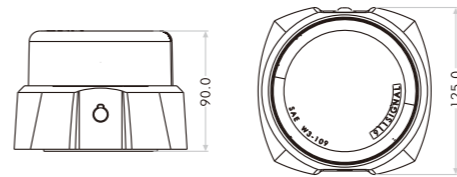
Website: www.911signal.com

911 SIGNAL®



C12 MAG LED BEACON

DIMENSIONS



REMOTE CONTROL

- With the beacon turned on, the control will be connected to function.
- Use the control within 35m from the product.

Function Display

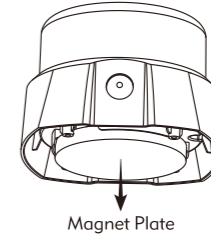


HOW TO CHARGE THE PRODUCT

1. Connect the cigarette plug (included) to the cigarette lighter port in the vehicle (12V only).
2. Charge via 110-220V power with a universal power adapter (sold separately).
3. A 4-hour charge allows 8-hour duration.
4. A 3-hour charge allows 5-hour duration. (Applicable to the ECO version)

MOUNTING

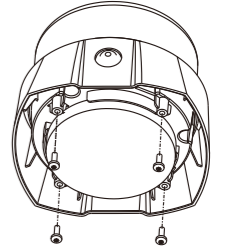
• Magnetic Mount



Magnet Plate



• Permanent Mount with 4 screws



- (Soon available) An iron sheet will be provided for vehicles with aluminum or glass roofs. Choose from adhesive tape, suction cups or velcro tapes to fasten and secure the product.

WIRING

3m long wire with an A13-54 cigarette plug (12V)

ON/OFF



FLASH PATTERNS

- | | |
|-----------------------|--|
| 1. Random(Default) | 12. Quad(All) |
| 2. Single(Split) | 13. Quint(All) |
| 3. Double(Split) | 14. Mega(All) |
| 4. Quad(Split) | 15. Ultra(All) |
| 5. Quint(Split) | 16. Single-Quad(All) |
| 6. Mega(Split) | 17. Single-H/L(All) |
| 7. Ultra(Split) | 18. ECE 65 Double Flash Phase 1 |
| 8. Single-Quad(Split) | 19. ECE 65 Double Flash Phase 2 |
| 9. Single-H/L(Split) | 20. ECE 65 120FPM Single Flash Phase 1 |
| 10. Single(All) | 21. ECE 65 120FPM Single Flash Phase 2 |
| 11. Double(All) | 22. ECE 65 125FPM Rotator Flash |